

LÖSUNGEN

GEHÖRBILDUNG D3

Die Lösungen sind grün gekennzeichnet.

SEITE 112

1  

2  

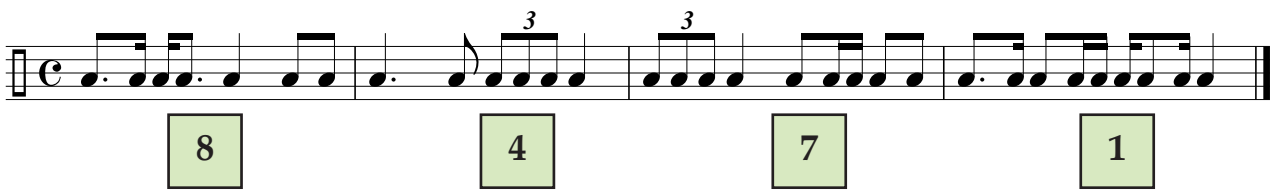
3 

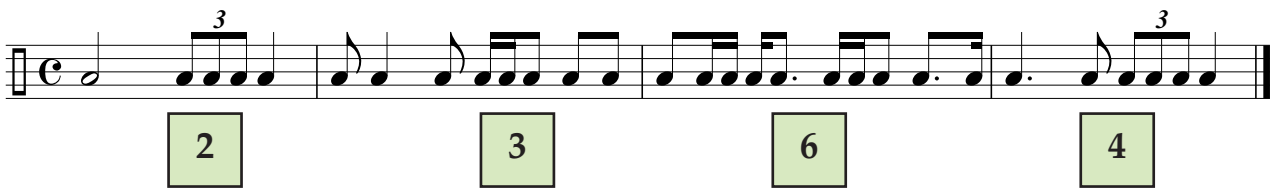
4  

5 


1  

2  


3 

4 

SEITE 116

1  CD 81


2  CD 82


3  CD 83


4  CD 84


5  CD 85

6  CD 86

7  CD 87

8  CD 88

9  CD 89

10  CD 90

1  3

CD
91

2  1

3  4

4  2

SEITE 119

1  CD 92

2  CD 93

3  CD 94

4  CD 95

5  CD 96

6  CD 97

7  CD 98

8  CD 99

9  CD 100

10  CD 101

SEITE 120

1

g6 k3 r4 k7 r5 r4

CD 103


2

k2 k6 g3 g2 g7 g6

CD 104

CD
105


1



g2 k3 k2 g3 k2 k3

5 2 1 6 3 4


2



g3 r4 k2 k3 k3 g2

6 1 3 5 2 4


3



g2 r5 r4 g3 r5 k2

5 2 6 1 4 3

4




r4 k3 k6 r5 r1 g6

2 4 1 6 3 5

CD
106


5



r5 k7 g2 g6 k6 r4

5 3 2 6 1 4

6



g3 r8 k6 k7 g2 r5

1 6 4 2 5 3

SEITE 122

1

CD 107

Musical notation for exercise 1, measures 1-5. The exercise is written on two staves: a treble clef staff and a bass clef staff. The key signature has one flat (B-flat). The melody in the treble staff consists of quarter notes: G4, A4, Bb4, C5, Bb4, A4, G4. The bass staff consists of quarter notes: G3, F3, E3, D3, C3, B2, A2.

2

CD 108

Musical notation for exercise 2, measures 1-5. The exercise is written on two staves: a treble clef staff and a bass clef staff. The key signature has one flat (B-flat). The melody in the treble staff consists of quarter notes: G4, A4, Bb4, C5, Bb4, A4, G4. The bass staff consists of quarter notes: G3, F3, E3, D3, C3, B2, A2.

3

CD 109

Musical notation for exercise 3, measures 1-5. The exercise is written on two staves: a treble clef staff and a bass clef staff. The key signature has one flat (B-flat). The melody in the treble staff consists of quarter notes: G4, A4, Bb4, C5, Bb4, A4, G4. The bass staff consists of quarter notes: G3, F3, E3, D3, C3, B2, A2.

4

CD 110

Musical notation for exercise 4, measures 1-5. The exercise is written on two staves: a treble clef staff and a bass clef staff. The key signature has one flat (B-flat). The melody in the treble staff consists of quarter notes: G4, A4, Bb4, C5, Bb4, A4, G4. The bass staff consists of quarter notes: G3, F3, E3, D3, C3, B2, A2.

5

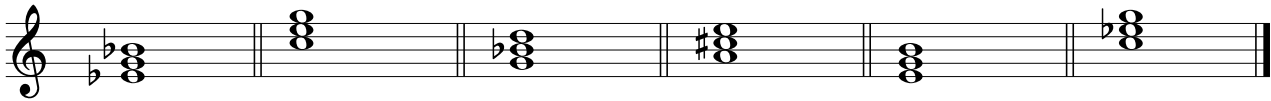
CD 111

Musical notation for exercise 5, measures 1-5. The exercise is written on two staves: a treble clef staff and a bass clef staff. The key signature has one flat (B-flat). The melody in the treble staff consists of quarter notes: G4, A4, Bb4, C5, Bb4, A4, G4. The bass staff consists of quarter notes: G3, F3, E3, D3, C3, B2, A2.


6

CD 112

Musical notation for exercise 6, measures 1-5. The exercise is written on two staves: a treble clef staff and a bass clef staff. The key signature has one flat (B-flat). The melody in the treble staff consists of quarter notes: G4, A4, Bb4, C5, Bb4, A4, G4. The bass staff consists of quarter notes: G3, F3, E3, D3, C3, B2, A2.

1  CD
116

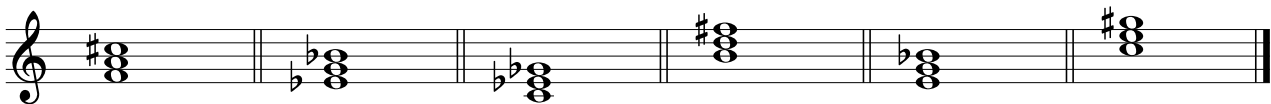
- a) D b) D c) m d) D e) m f) m

2  CD
117

- a) m b) D c) ° d) m e) ° f) D

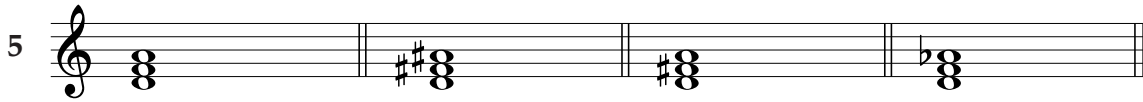
3  CD
118

- a) D b) + c) m d) + e) D f) m

4  CD
119

- a) + b) D c) ° d) m e) ° f) +

SEITE 124 - FORTSETZUNG

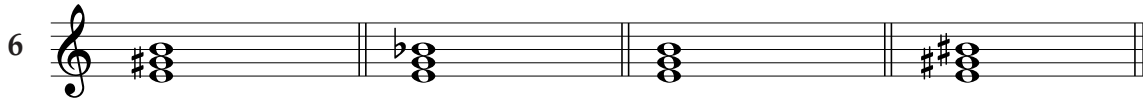


a) m

b) +

c) D

d) °

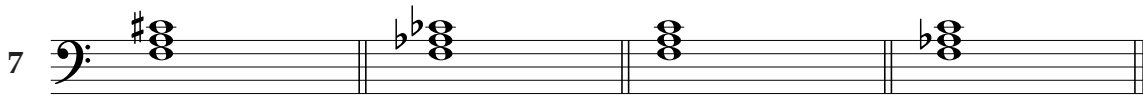


a) D

b) °

c) m

d) +

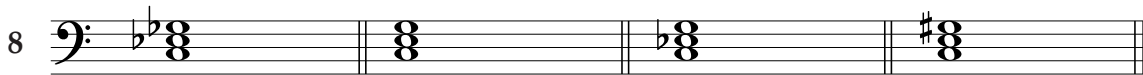


a) +

b) °

c) D

d) m

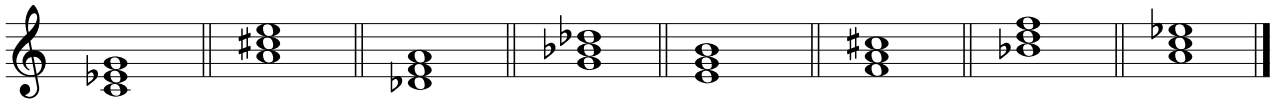


a) °


b) D

c) m

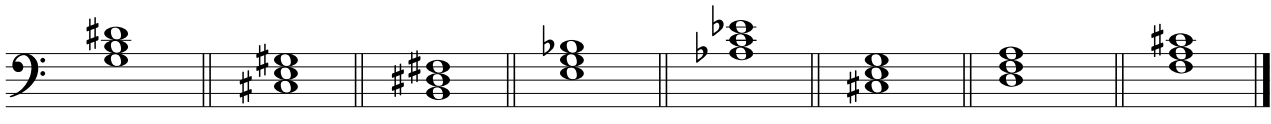
d) +

1  CD
120

- a) m b) D c) + d) ° e) m f) + g) D h) °

2  CD
121

- a) ° b) D c) + d) m e) + f) m g) ° h) D

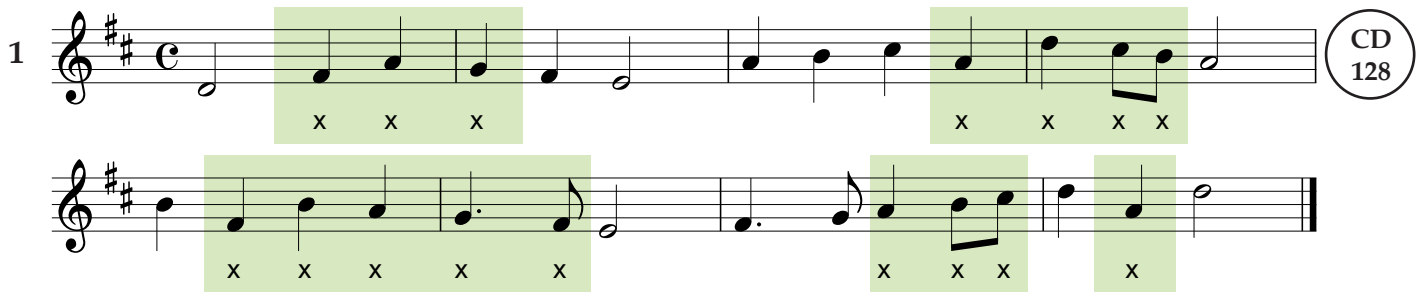
3  CD
122

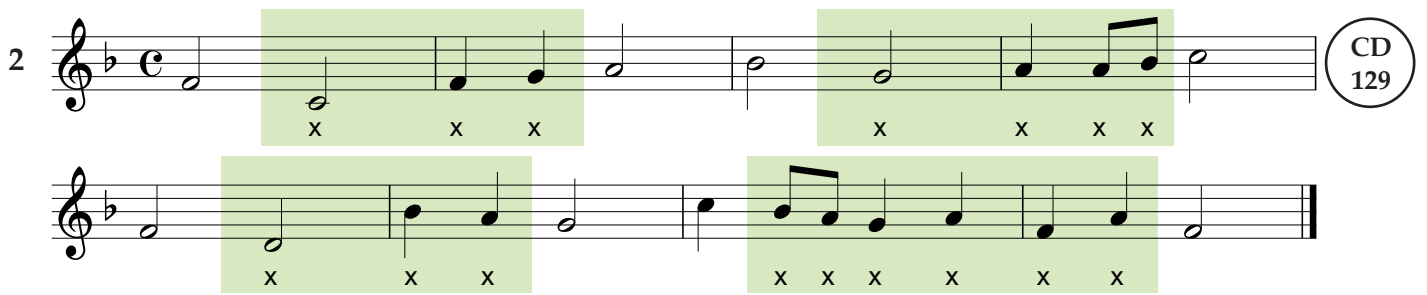
- a) + b) m c) D d) ° e) D f) ° g) m h) +

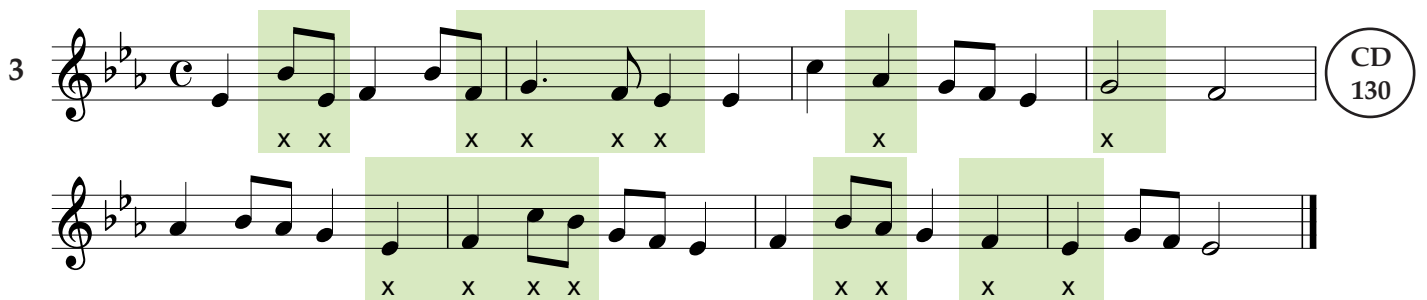
4  CD
123

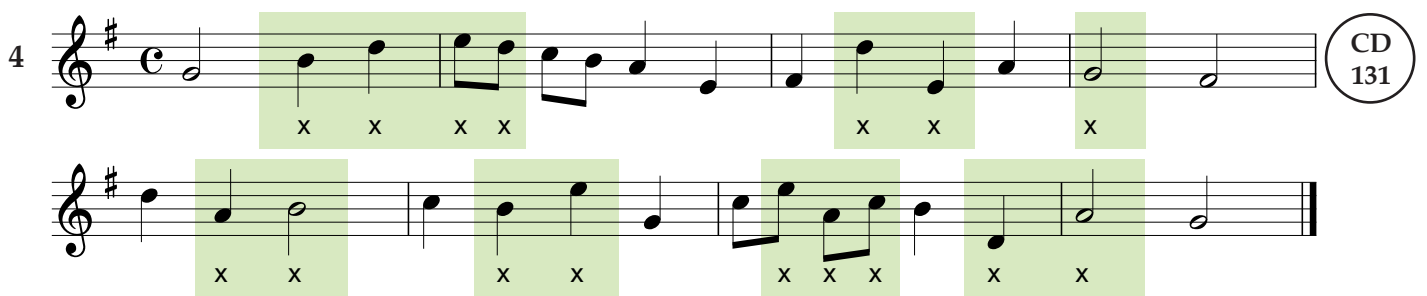
- a) + b) m c) ° d) D e) ° f) D g) + h) m

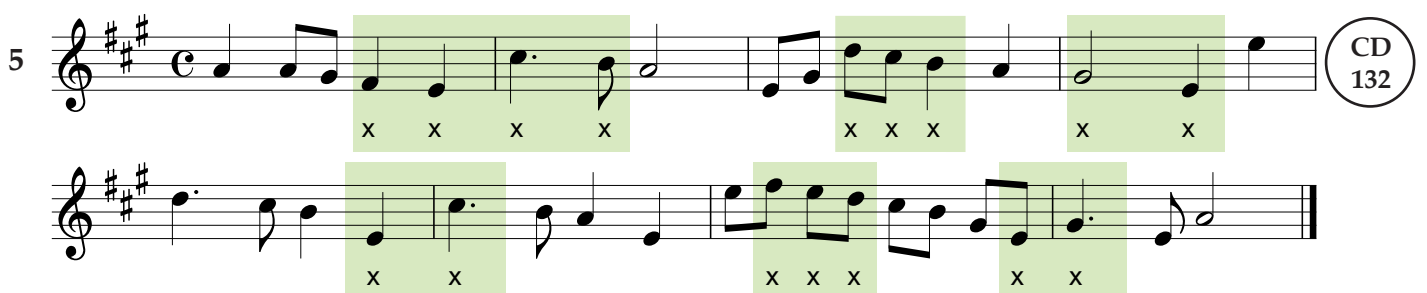
The image displays a musical score for page 126, consisting of eight systems of music. Each system is numbered 1 through 8 on the left. The notation is in treble clef with a 2/4 time signature. The key signature varies: systems 1 and 2 are in B-flat major (two flats); systems 3 and 4 are in D major (two sharps); system 5 is in B-flat major (two flats); system 6 is in D major (two sharps); system 7 is in B-flat major (two flats); and system 8 is in B-flat major (two flats). Green rectangular highlights are placed under specific musical phrases in each system. On the right side, there are two circular labels: 'CD 126' at the top right and 'CD 127' at the bottom right, indicating the corresponding audio recording.

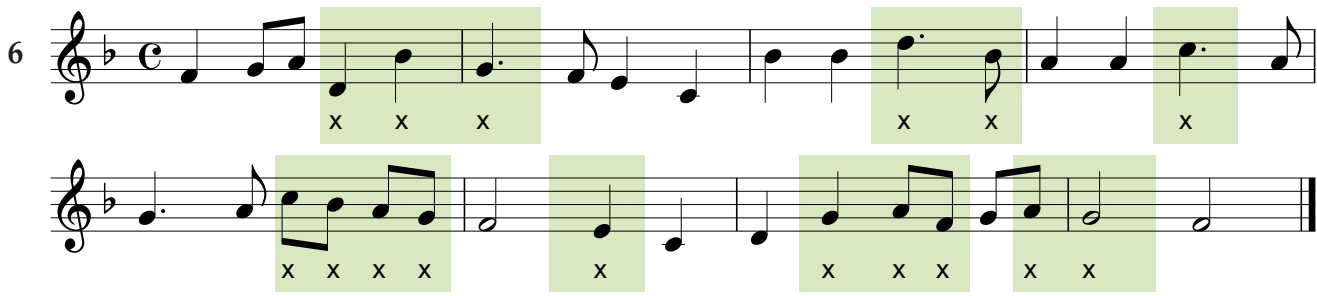

1  CD 128

2 

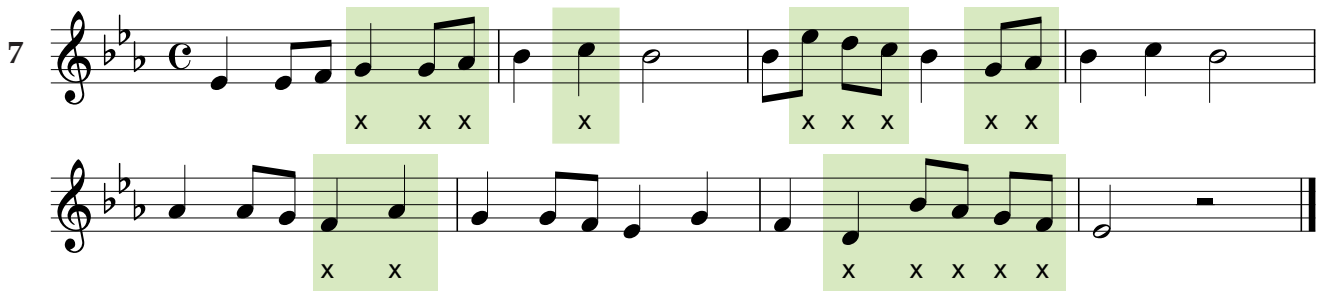

3 

4 

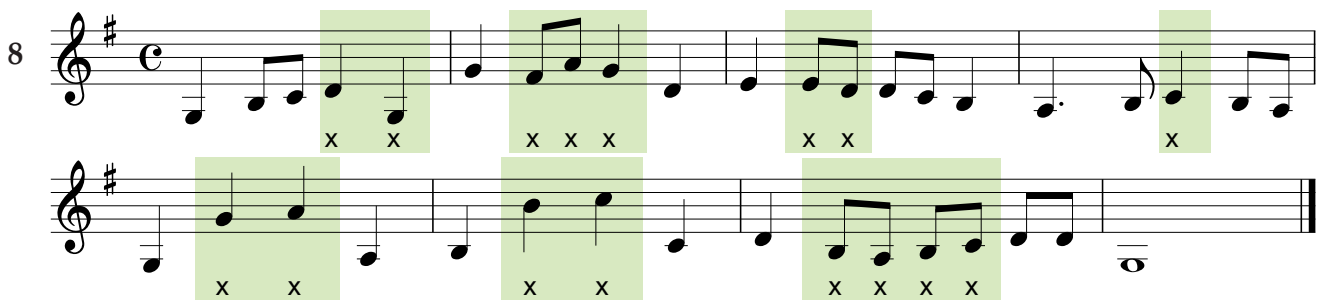

5 

6  

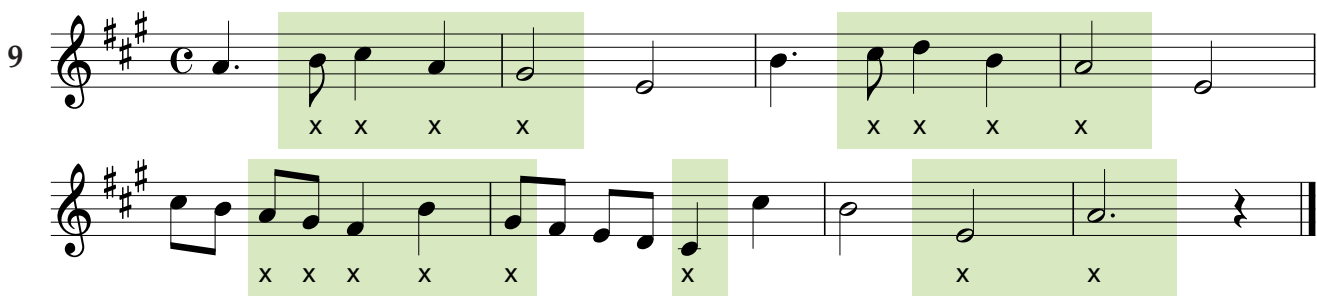

Exercise 6 consists of two staves of music in C major, 4/4 time. The first staff has three green highlights with 'x' marks below them: the first three notes (G4, A4, B4), the next two notes (C5, B4), and the final note (G4). The second staff has four green highlights with 'x' marks below them: the first four notes (G4, A4, B4, C5), the fifth note (B4), the next three notes (A4, G4, F4), and the final two notes (E4, D4).

7  



Exercise 7 consists of two staves of music in C major, 4/4 time. The first staff has four green highlights with 'x' marks below them: the first three notes (G4, A4, B4), the fourth note (C5), the next three notes (B4, A4, G4), and the final two notes (F4, E4). The second staff has two green highlights with 'x' marks below them: the first two notes (G4, A4) and the last four notes (B4, A4, G4, F4).

8  

Exercise 8 consists of two staves of music in C major, 4/4 time. The first staff has four green highlights with 'x' marks below them: the first two notes (G4, A4), the next three notes (B4, C5, B4), the next two notes (A4, G4), and the final note (F4). The second staff has three green highlights with 'x' marks below them: the first two notes (G4, A4), the next two notes (B4, C5), and the last four notes (B4, A4, G4, F4).

9  

Exercise 9 consists of two staves of music in C major, 4/4 time. The first staff has two green highlights with 'x' marks below them: the first four notes (G4, A4, B4, C5) and the next four notes (B4, A4, G4, F4). The second staff has three green highlights with 'x' marks below them: the first five notes (G4, A4, B4, C5, B4), the sixth note (A4), and the last two notes (G4, F4).

10  

Exercise 10 consists of two staves of music in C major, 4/4 time. The first staff has three green highlights with 'x' marks below them: the first two notes (G4, A4), the fifth note (B4), and the last three notes (A4, G4, F4). The second staff has four green highlights with 'x' marks below them: the first three notes (G4, A4, B4), the next three notes (C5, B4, A4), the next two notes (G4, F4), and the final note (E4).