

Korrektur Praxisheft Saxophon



D2/E1 - Seite 15 - Takt 8 (Falscher Ton)

falsch

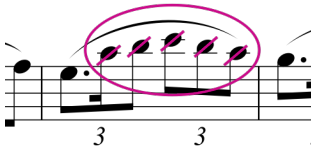


richtig



D2/E1 - Seite 15 - Takt 29 (Falsche Töne)

falsch



richtig



D2/E2 - Seite 16 - Takt 4 (Falscher Ton)

falsch

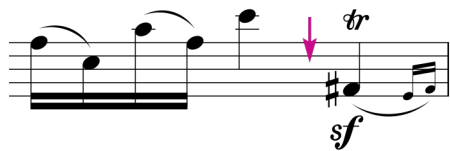


richtig

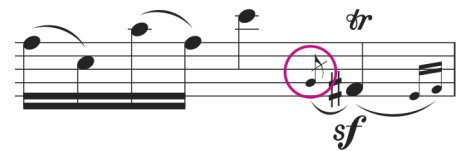


D2/E2 - Seite 17 - Takt 18 (Vorschlag fehlt)

falsch



richtig

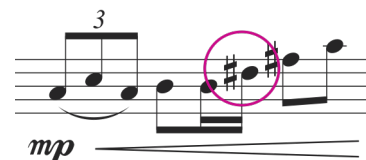


D2/V1 - Seite 20 - Takt 22 (Falscher Ton)

falsch



richtig



D2/V2 - Seite 22 - Takt 5 (Fehlender Takt, fehlende Akzente)

falsch

5

10

p

cresc. e stretto

richtig

5

10

p

cresc. e stretto


D3/V1 - Seite 37 - Takt 26 (Falsche Note beim Vorschlag)

falsch

richtig

TONLEITERN UND DREIKLÄNGE D2

Alle Tonleitern und Dreiklänge sind **auswendig** vorzutragen.

 = 92 - 100

C - Dur

Two staves of musical notation for the C major scale and triad. The first staff shows the ascending and descending scales. The second staff shows the C major triad (C-E-G) in two positions: first position (C4-E4-G4) and second position (C5-E5-G5).

a - Moll harmonisch

One staff of musical notation for the a minor harmonic scale, showing the ascending and descending lines with the characteristic raised seventh degree (G#).

G - Dur

Two staves of musical notation for the G major scale and triad. The first staff shows the ascending and descending scales. The second staff shows the G major triad (G-B-D) in two positions: first position (G4-B4-D5) and second position (G5-B5-D6).

e - Moll harmonisch

Two staves of musical notation for the e minor harmonic scale and triad. The first staff shows the ascending and descending scales with the raised seventh degree (D#). The second staff shows the e minor triad (E-G-B) in two positions: first position (E4-G4-B4) and second position (E5-G5-B5).

D - Dur

Two staves of musical notation for the D major scale in treble clef. The first staff contains the ascending scale: D4, E4, F#4, G4, A4, B4, C#5, D5. The second staff contains the descending scale: D5, C#5, B4, A4, G4, F#4, E4, D4. The key signature has two sharps (F# and C#) and the time signature is common time (C).

h - Moll harmonisch

Two staves of musical notation for the harmonic minor scale in treble clef. The first staff contains the ascending scale: D4, E4, F#4, G4, A4, B4, C#5, D5. The second staff contains the descending scale: D5, C#5, B4, A4, G4, F#4, E4, D4. The key signature has two sharps (F# and C#) and the time signature is common time (C).

A - Dur

One staff of musical notation for the A major scale in treble clef. The scale is: A4, B4, C#5, D5, E5, F#5, G#5, A6. The key signature has three sharps (F#, C#, G#) and the time signature is common time (C). The scale is written with repeat signs at the beginning and end.

fis - Moll harmonisch

Two staves of musical notation for the harmonic minor scale in treble clef. The first staff contains the ascending scale: F#4, G4, A4, B4, C#5, D5, E5, F#5. The second staff contains the descending scale: F#5, E5, D5, C#5, B4, A4, G4, F#4. The key signature has three sharps (F#, C#, G#) and the time signature is common time (C).

E - Dur

Two staves of musical notation for the E major scale in treble clef. The first staff contains the ascending scale: E4, F#4, G#4, A4, B4, C#5, D#5, E5. The second staff contains the descending scale: E5, D#5, C#5, B4, A4, G#4, F#4, E4. The key signature has three sharps (F#, C#, G#) and the time signature is common time (C).

cis - Moll harmonisch

Two staves of musical notation for the key of C major. The first staff contains a melodic line with notes: C4, D4, E4, F4, G4, A4, B4, C5, B4, A4, G4, F4, E4, D4, C4. The second staff contains a harmonic accompaniment with notes: C4, G4, C5, B4, A4, G4, F4, E4, D4, C4.

F - Dur

Two staves of musical notation for the key of F major. The first staff contains a melodic line with notes: F4, G4, A4, Bb4, C5, Bb4, A4, G4, F4, E4, D4, C4. The second staff contains a harmonic accompaniment with notes: F4, C5, Bb4, A4, G4, F4, E4, D4, C4.

d - Moll harmonisch

Two staves of musical notation for the key of D minor. The first staff contains a melodic line with notes: D4, E4, F4, G4, Ab4, Bb4, C5, Bb4, Ab4, G4, F4, E4, D4. The second staff contains a harmonic accompaniment with notes: D4, Ab4, Bb4, C5, Bb4, Ab4, G4, F4, E4, D4.

B - Dur

Two staves of musical notation for the key of B major. The first staff contains a melodic line with notes: B3, C4, D4, E4, F#4, G#4, A5, B5, A5, G#4, F#4, E4, D4, C4, B3. The second staff contains a harmonic accompaniment with notes: B3, F#4, G#4, A5, B5, A5, G#4, F#4, E4, D4, C4, B3.

g - Moll harmonisch

Two staves of musical notation for the key of G minor. The first staff contains a melodic line with notes: G4, A4, Bb4, C5, Bb4, Ab4, G4, F4, E4, D4, C4. The second staff contains a harmonic accompaniment with notes: G4, C5, Bb4, Ab4, G4, F4, E4, D4, C4.

Es - Dur

Musical notation for Es - Dur scale in treble clef, 2/4 time signature. The scale is written on two staves. The first staff contains the ascending and descending lines of the scale. The second staff contains the ascending and descending lines of the scale with a double bar line in the middle.

c - Moll harmonisch

Musical notation for c - Moll harmonisch scale in treble clef, 2/4 time signature. The scale is written on two staves. The first staff contains the ascending and descending lines of the scale. The second staff contains the ascending and descending lines of the scale with a double bar line in the middle.

As - Dur

Musical notation for As - Dur scale in treble clef, 2/4 time signature. The scale is written on one staff. The ascending and descending lines of the scale are shown with repeat signs and first/second endings.

f - Moll harmonisch

Musical notation for f - Moll harmonisch scale in treble clef, 2/4 time signature. The scale is written on two staves. The first staff contains the ascending and descending lines of the scale. The second staff contains the ascending and descending lines of the scale with a double bar line in the middle.

Chromatisch

Musical notation for Chromatisch scale in treble clef, 2/4 time signature. The scale is written on two staves. The first staff contains the ascending line of the scale. The second staff contains the descending line of the scale.

TONLEITERN UND DREIKLÄNGE D3

Alle Tonleitern und Dreiklänge sind **auswendig** vorzutragen.

 = 112 - 120

C - Dur



a - Moll harmonisch



a - Moll melodisch



G - Dur



e - Moll harmonisch

Two staves of musical notation for the e - Moll harmonisch scale. The top staff shows the ascending scale: E4, F4, G4, A4, Bb4, C5, D5, Eb5, F5, G5, A5, Bb5, C6. The bottom staff shows the descending scale: Bb5, A5, G5, F5, Eb5, D5, C5, Bb4, A4, G4, F4, E4. The key signature has one sharp (F#) and the time signature is common time (C).

e - Moll melodisch

Two staves of musical notation for the e - Moll melodisch scale. The top staff shows the ascending scale: E4, F4, G4, A4, Bb4, C5, D5, Eb5, F5, G5, A5, Bb5, C6. The bottom staff shows the descending scale: Bb5, A5, G5, F5, Eb5, D5, C5, Bb4, A4, G4, F4, E4. The key signature has one sharp (F#) and the time signature is common time (C).

D - Dur

Two staves of musical notation for the D - Dur scale. The top staff shows the ascending scale: D4, E4, F#4, G4, A4, B4, C5, D5, E5, F#5, G5, A5, B5, C6. The bottom staff shows the descending scale: C6, B5, A5, G5, F#5, E5, D5, C5, B4, A4, G4, F#4, E4, D4. The key signature has two sharps (F# and C#) and the time signature is common time (C).

h - Moll harmonisch

Two staves of musical notation for the h - Moll harmonisch scale. The top staff shows the ascending scale: B4, C5, D5, Eb5, F5, G5, Ab5, Bb5, C6. The bottom staff shows the descending scale: Bb5, Ab5, G5, F5, Eb5, D5, C5, B4. The key signature has two sharps (F# and C#) and the time signature is common time (C).

h - Moll melodisch

Two staves of musical notation for the h - Moll melodisch scale. The top staff shows the ascending scale: B4, C5, D5, Eb5, F5, G5, Ab5, Bb5, C6. The bottom staff shows the descending scale: Bb5, Ab5, G5, F5, Eb5, D5, C5, B4. The key signature has two sharps (F# and C#) and the time signature is common time (C).

A - Dur



fis - Moll harmonisch



fis - Moll melodisch



E - Dur



cis - Moll harmonisch



cis - Moll melodisch

Two staves of musical notation for the 'cis - Moll melodisch' exercise. The first staff contains a melodic line in C minor with a key signature of three sharps (F#, C#, G#) and a common time signature. The second staff contains a bass line. The melody includes a trill on the note G# in the third measure.

H - Dur

Two staves of musical notation for the 'H - Dur' exercise. The first staff contains a melodic line in D major with a key signature of two sharps (F#, C#) and a common time signature. The second staff contains a bass line.

Fis - Dur

Two staves of musical notation for the 'Fis - Dur' exercise. The first staff contains a melodic line in E major with a key signature of three sharps (F#, C#, G#) and a common time signature. The second staff contains a bass line.

F - Dur

Two staves of musical notation for the 'F - Dur' exercise. The first staff contains a melodic line in F major with a key signature of one flat (Bb) and a common time signature. The second staff contains a bass line.

d - Moll harmonisch

Two staves of musical notation for the 'd - Moll harmonisch' exercise. The first staff contains a melodic line in D minor with a key signature of one flat (Bb) and a common time signature. The second staff contains a bass line.

d - Moll melodisch

Two staves of musical notation in D minor, 6/8 time. The first staff contains a melodic line with notes: D4, E4, F4, G4, A4, Bb4, C5, Bb4, A4, G4, F4, E4, D4. The second staff contains a bass line with notes: D4, E4, F4, G4, A4, Bb4, C5, Bb4, A4, G4, F4, E4, D4. There are some accidentals and dynamics markings like (p) and (b).

B - Dur

Two staves of musical notation in B major, 6/8 time. The first staff contains a melodic line with notes: B3, C4, D4, E4, F#4, G4, A4, B4, A4, G4, F#4, E4, D4, C4, B3. The second staff contains a bass line with notes: B3, C4, D4, E4, F#4, G4, A4, B4, A4, G4, F#4, E4, D4, C4, B3.

g - Moll harmonisch

One staff of musical notation in G minor, 6/8 time. The first staff contains a melodic line with notes: G3, A3, Bb3, C4, Bb3, A3, G3, F#3, E3, D3, C3, Bb3, A3, G3. The second staff contains a bass line with notes: G3, A3, Bb3, C4, Bb3, A3, G3, F#3, E3, D3, C3, Bb3, A3, G3. There are repeat signs and dynamics markings like (p) and (b).

g - Moll melodisch

One staff of musical notation in G minor, 6/8 time. The first staff contains a melodic line with notes: G3, A3, Bb3, C4, Bb3, A3, G3, F#3, E3, D3, C3, Bb3, A3, G3. The second staff contains a bass line with notes: G3, A3, Bb3, C4, Bb3, A3, G3, F#3, E3, D3, C3, Bb3, A3, G3. There are repeat signs and dynamics markings like (p) and (b).

Es - Dur

Two staves of musical notation in E-flat major, 6/8 time. The first staff contains a melodic line with notes: Eb3, F3, G3, Ab3, Bb3, C4, Bb3, Ab3, G3, F3, Eb3, D3, C3, Bb3, Ab3, G3, F3, Eb3. The second staff contains a bass line with notes: Eb3, F3, G3, Ab3, Bb3, C4, Bb3, Ab3, G3, F3, Eb3, D3, C3, Bb3, Ab3, G3, F3, Eb3.

c - Moll harmonisch

Two staves of musical notation for c - Moll harmonisch. The top staff contains a melodic line with eighth and sixteenth notes, including accidentals for flats and naturals. The bottom staff contains a bass line with a whole note and a half note, followed by a melodic line with eighth and sixteenth notes.

c - Moll melodisch

Two staves of musical notation for c - Moll melodisch. The top staff contains a melodic line with eighth and sixteenth notes, including accidentals for flats and naturals. The bottom staff contains a bass line with a whole note and a half note, followed by a melodic line with eighth and sixteenth notes.

As - Dur

One staff of musical notation for As - Dur. The staff contains a melodic line with eighth and sixteenth notes, including accidentals for flats and naturals.

f - Moll harmonisch

Two staves of musical notation for f - Moll harmonisch. The top staff contains a melodic line with eighth and sixteenth notes, including accidentals for flats and naturals. The bottom staff contains a bass line with a whole note and a half note, followed by a melodic line with eighth and sixteenth notes.

f - Moll melodisch

Two staves of musical notation for f - Moll melodisch. The top staff contains a melodic line with eighth and sixteenth notes, including accidentals for flats and naturals. The bottom staff contains a bass line with a whole note and a half note, followed by a melodic line with eighth and sixteenth notes.

Des - Dur

Two staves of musical notation for the Des - Dur scale. The top staff shows the ascending scale: D4, E4, F4, G4, A4, B4, C5, B4, A4, G4, F4, E4, D4. The bottom staff shows the descending scale: C5, B4, A4, G4, F4, E4, D4, C4, B3, A3, G3, F3, E3, D3.

Ges - Dur

Two staves of musical notation for the Ges - Dur scale. The top staff shows the ascending scale: G4, A4, B4, C5, D5, E5, F5, E5, D5, C5, B4, A4, G4. The bottom staff shows the descending scale: F5, E5, D5, C5, B4, A4, G4, F4, E4, D4, C4, B3, A3, G3, F3, E3, D3.

Chromatisch

Two staves of musical notation for the chromatic scale. The top staff shows the ascending chromatic scale: C4, C#4, D4, D#4, E4, E#4, F4, F#4, G4, G#4, A4, A#4, B4, B#4, C5. The bottom staff shows the descending chromatic scale: C5, B#4, B4, A#4, A4, G#4, G4, F#4, F4, E#4, E4, D#4, D4, C#4, C4.