

# Aus einer schönen Rosen

Trad./Ludwig Resch

1. x Pause

Flöte-C

1. x Pause

Klarinette in Es

1. x Pause

Klarinette 1 in B

1. x Pause

Klarinette 2 in B

1. x Pause

Klarinette 3 in B

1. x Pause

1. Flügelhorn

1. x Pause

2. Flügelhorn

1. Trompete in B

2. Trompete in B

Tenorhorn

Bariton-C

Bariton-B

1. x Pause

1./3. Horn in Es

1. x Pause

2./4. Horn in Es

1. x Pause

1./2. Posaune-C

1. x Pause

1./2. Tuba-C

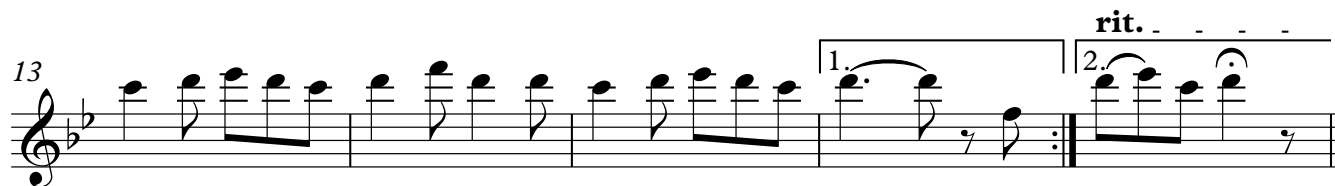
Detailed description: This is a page of a musical score for the piece 'Aus einer schönen Rosen'. The score is arranged in a standard orchestral format with multiple staves. The instruments listed on the left are: Flöte-C, Klarinette in Es, Klarinette 1 in B, Klarinette 2 in B, Klarinette 3 in B, 1. Flügelhorn, 2. Flügelhorn, 1. Trompete in B, 2. Trompete in B, Tenorhorn, Bariton-C, Bariton-B, 1./3. Horn in Es, 2./4. Horn in Es, 1./2. Posaune-C, and 1./2. Tuba-C. The music is in a 6/8 time signature and a key signature of one flat (B-flat). Each staff begins with a first-measure rest, indicated by '1. x Pause'. The notation includes various rhythmic values such as eighth and sixteenth notes, rests, and dynamic markings like 'z' (zando) and 'f' (forte). The score is presented in a clean, black-and-white format.

This musical score page contains measures 9 through 12 for a brass and woodwind ensemble. The instruments are arranged in two systems. The first system includes Flute (Fl.), Clarinet in E-flat (Kl. (Es)), Clarinet in B-flat (Kl.), and Trombone (Kl.). The second system includes Flute in the hand (Flhn.), Flute (Flhn.), Trumpet (Trp.), Trumpet (Trp.), Baritone (Bar.), Baritone Horn (Bar. Hn.), Baritone (Bar.), Horn in E-flat (Hn. (Es)), Horn in E-flat (Hn. (Es)), Trombone (Pos.), and Tuba. The music is in a key signature of two flats (B-flat and E-flat) and a common time signature. Measure 9 begins with a rehearsal mark. The score features various rhythmic patterns, including eighth and sixteenth notes, and rests. A first ending bracket spans measures 10 and 11, leading to a second ending in measure 12 which is marked with a 'rit.' (ritardando) instruction. The notation includes stems, beams, and various articulation marks such as accents and slurs.

# Aus einer schönen Rosen

Flöte-C

Trad./Ludwig Resch



Klarinette in Es

# Aus einer schönen Rosen

Trad./Ludwig Resch

1. x Pause

7

13

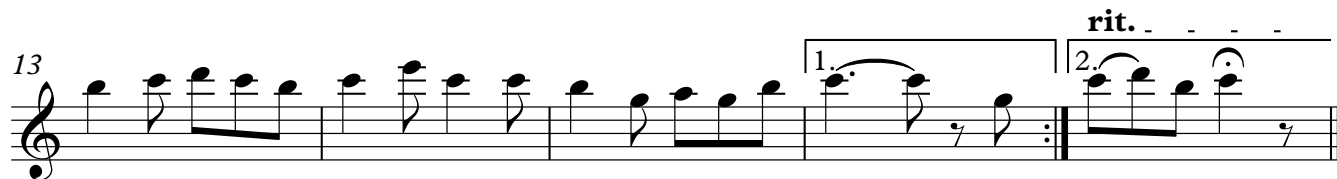
1. rit. - - - -

2.

# Aus einer schönen Rosen

Klarinette 1 in B

Trad./Ludwig Resch



Klarinette 2 in B

# Aus einer schönen Rosen

Trad./Ludwig Resch

1. x Pause

7

13

Klarinette 3 in B

# Aus einer schönen Rosen

Trad./Ludwig Resch

1. x Pause

7

13

1. rit. - - -

2.

# Aus einer schönen Rosen

1. Flügelhorn

Trad./Ludwig Resch

1. x Pause

7

13

1. rit. - - -

2.





# Aus einer schönen Rosen

1. Trompete in B

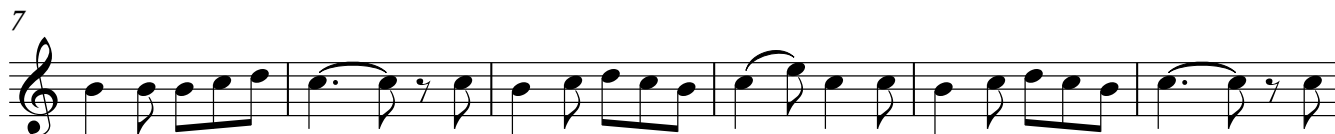
Trad./Ludwig Resch



2. Trompete in B

# Aus einer schönen Rosen

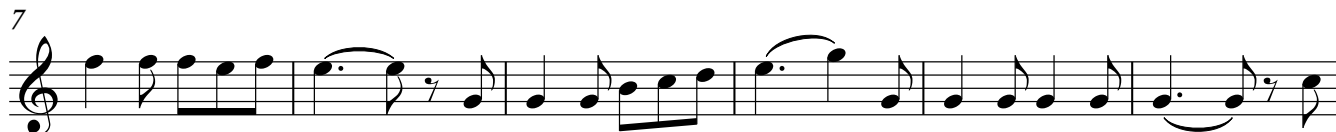
Trad./Ludwig Resch



Tenorhorn

# Aus einer schönen Rosen

Trad./Ludwig Resch



Bariton-C

# Aus einer schönen Rosen

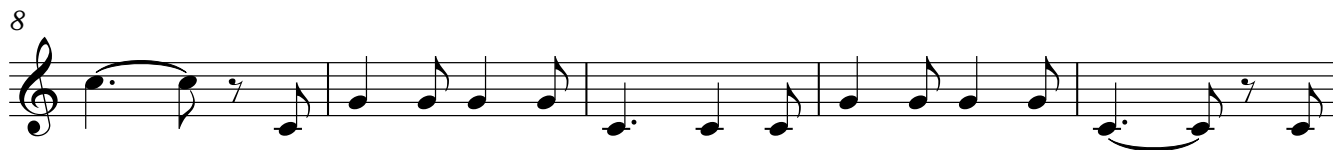
Trad./Ludwig Resch



Bariton-B

# Aus einer schönen Rosen

Trad./Ludwig Resch



# Aus einer schönen Rosen

1./3. Horn in Es

Trad./Ludwig Resch

1. x Pause

8

13

# Aus einer schönen Rosen

2./4. Horn in Es

Trad./Ludwig Resch

1. x Pause

8

13



# Aus einer schönen Rosen

1./2. Posaune-C

Trad./Ludwig Resch

1. x Pause

8

13

rit.

1. 2.

# Aus einer schönen Rosen

1./2. Tuba-C

Trad./Ludwig Resch

1. x Pause



8



13

